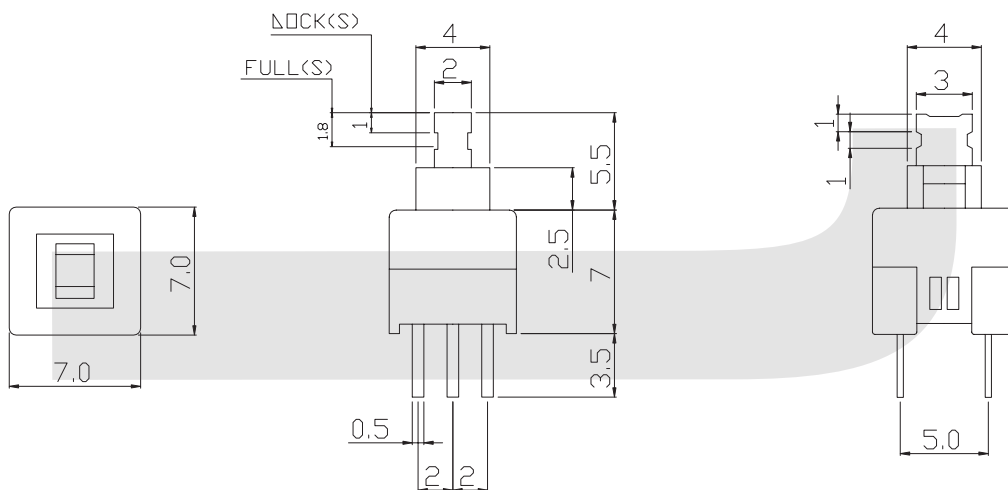
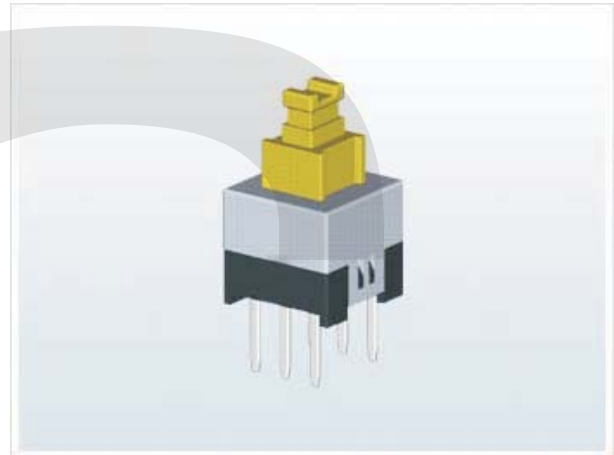


## Standard Vertical Push Switch Series

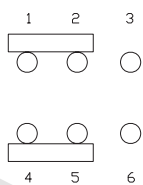
KLS7-P7.0X7.0 Standard Vertical Push Switch Series

### ELECTRICAL

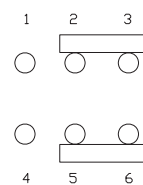
- Rating :DC30V 0.1A
- Insulation Resistance :>100MΩ DC125V
- Withstand Voltage :AC 125V 1 minute
- Contact Resistance :<100mΩ
- Soldering Temper :250°C max.3sec
- Mechanical Life :100,000 cycles
- Electrical Life :10,000 cycles
- Ambient Temper.Used :-25°C to +65°C
- Ambient Humidity Used :<85% RH
- Operating force :150±80 gf



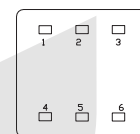
### FREE



### PUSH



### SCHEMATIC



## ORDER INFORMATION

Part Number **KLS7-P7.0x7.0 X**  
 Standard Vertical Push Switch Series  
 0=Non Lock 1=lock