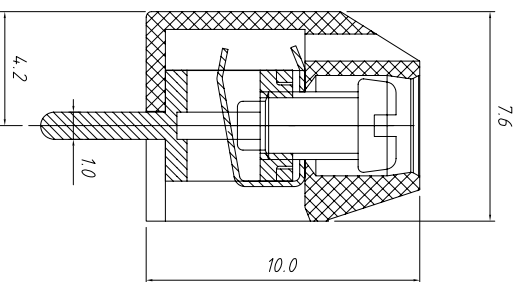
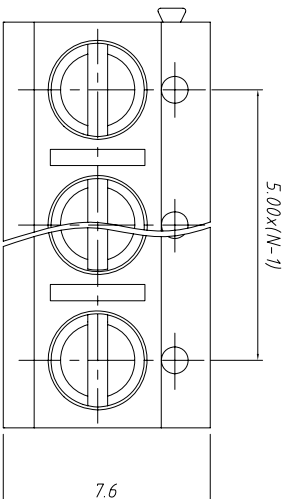
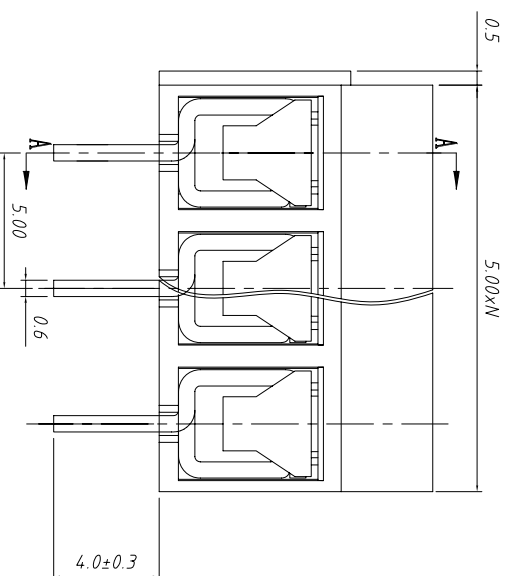


PCB LAYOUT



SECTION A-A

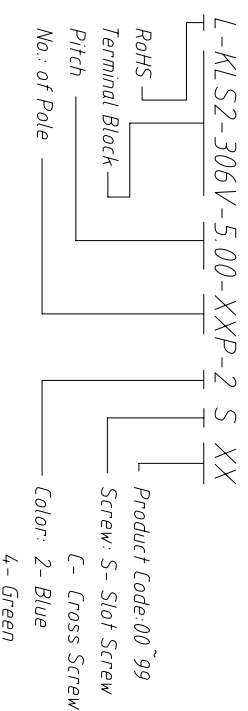


Material
 Screw: M2.5, Steel, Zn plated
 Shrapnel: Phosphor bronze, Nickel plated
 Pin header: Brass, Tin plated
 Housing: PA66 or PBT, UL94V-0

Electrical
 Rated voltage: 250V
 Rated current: 16A
 Wire range: 22~14AWG 1.5mm²
 Contact Resistance: 20 mΩ
 Insulation resistance: 500MΩ/DC500V
 Withstand voltage: AC2000V / 1min

Mechanical
 Temp. Range: -40 °C ~ +105 °C
 Soldering: 250 °C 5Sec. Max.
 Torque: 0.4 N.m (3.5Lb. in)
 Strip length: 4.5~5 mm

Order Information



| GENERAL TOLERANCE | | ANGLE TOLERANCE | | PROJECTION | | Description: |
|--------------------------|----------|-----------------|------------|------------|------------------------------|--------------|
| X: ±0.60 | .X ±0.38 | .XX ±0.25 | X: ±5° | .X ±3° | .XX ±2° | |
| | | | mm | | Screw CONN TERM BLOCK 5.00MM | |
| | | | A4 | | KLS P/N: | |
| | | | 2015-09-01 | | KLS2-306V-5.00-XXP-2S | |
| | | | 2015-09-15 | | | |
| | | | OF | | | |
| KLS ELECTRONIC CO., LTD. | | | | | | |