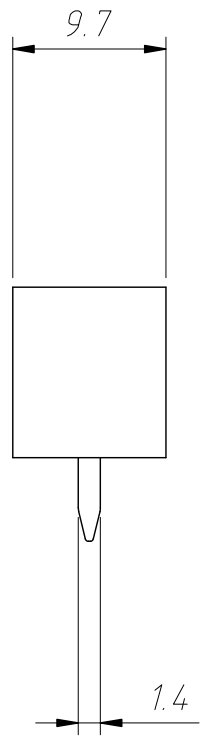
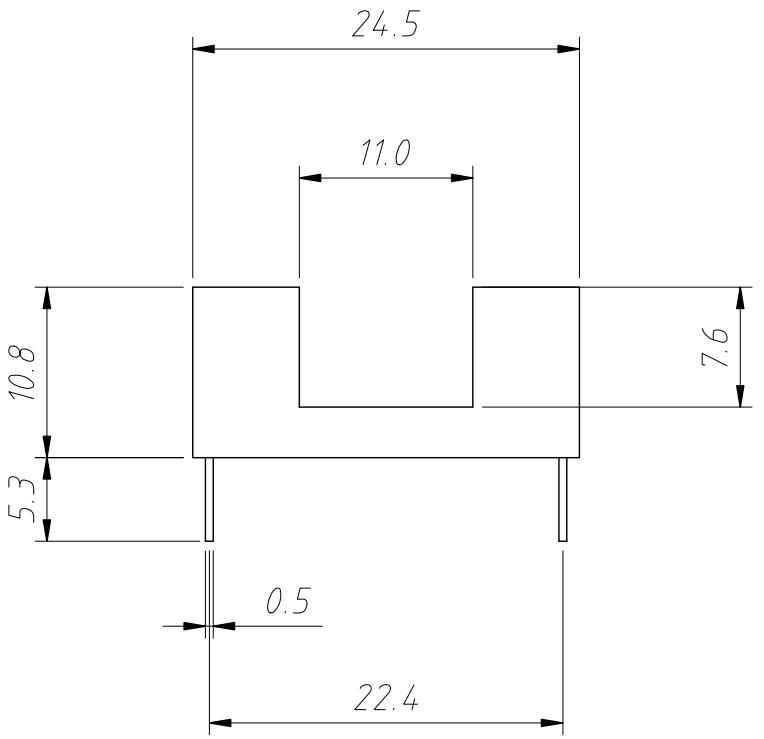


1
RoHS Compliance

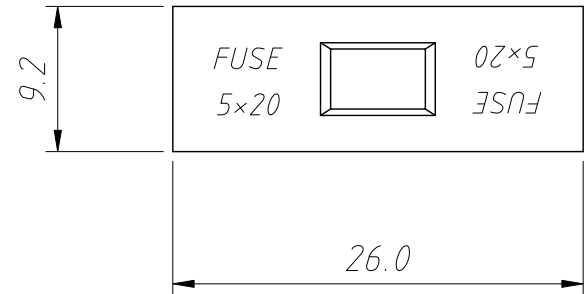
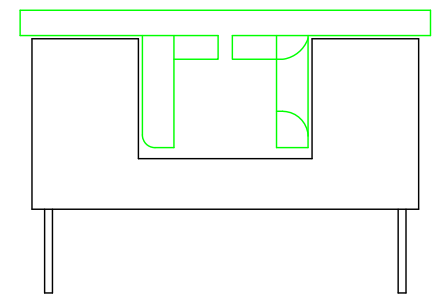
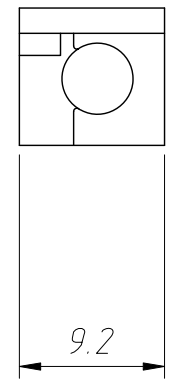
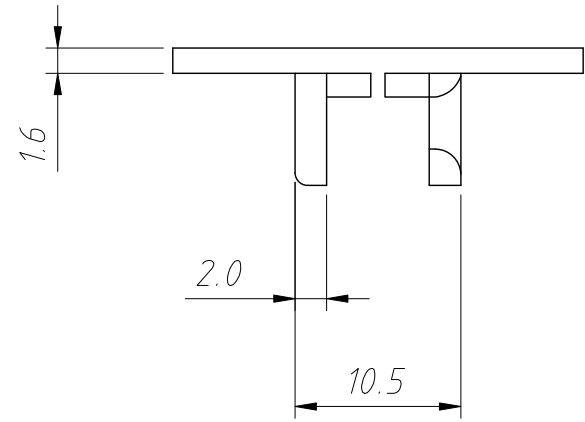


Material:
Body:PC+ABS
Contact:Brass, Tin Pated

Electrical Characteristics:
Fuse 5x20mm
Pitch 22.4mm
Rated Load:5A 250V.AC
Contact Resistance: ≤5mΩ
Insulation Resistance: ≥500MΩ
Withstand Voltage:AC 1000V(50Hz)/Min

ANGLE TOLERANCE	PROJECTION		Description:	
±3°			PCB type fuse holders	
GENERAL TOLERANCE	UNITS	mm	KLS P/N:	L-KLS5-1096
x.x ±0.30	SHEET SIZE	A4	2:1	NingBo KLS ELECTRONIC CO.,L TD.
x.xx ±0.20	Draw:	Daniel	2022-03-15	
x.xxx ±0.10	Check:	Daniel	2022-03-15	

1
RoHS Compliance



ANGLE TOLERANCE	PROJECTION	Description:		
±3°		PCB type fuse holders cover		
GENERAL TOLERANCE	UNITS	mm	KLS P/N:	L-KLS5-1096
x.x ±0.30	SHEET SIZE	A4	2:1	NingBo KLS ELECTRONIC CO.,L TD.
x.xx ±0.20	Draw:	Daniel	2022-03-15	
x.xxx ±0.10	Check:	Daniel	2022-03-15	